



CITY HALL OF GDAŃSK

Department of Development Programs

Line Investment Division

Investments on the Gdańsk waterfront

June 2019

Recently completed projects



**Programme of integrated flood protection of Żuławy region
Stage I: Rebuilding of the Radunia Canal within the area of Gdańsk City
(2009-2014)**



**Bay of Gdańsk water protection – construction and modernisation of the
rainwater drainage system in Gdańsk (2007-2014)**



The Programme for Revitalisation of Waterways in Gdańsk (2008-2012)



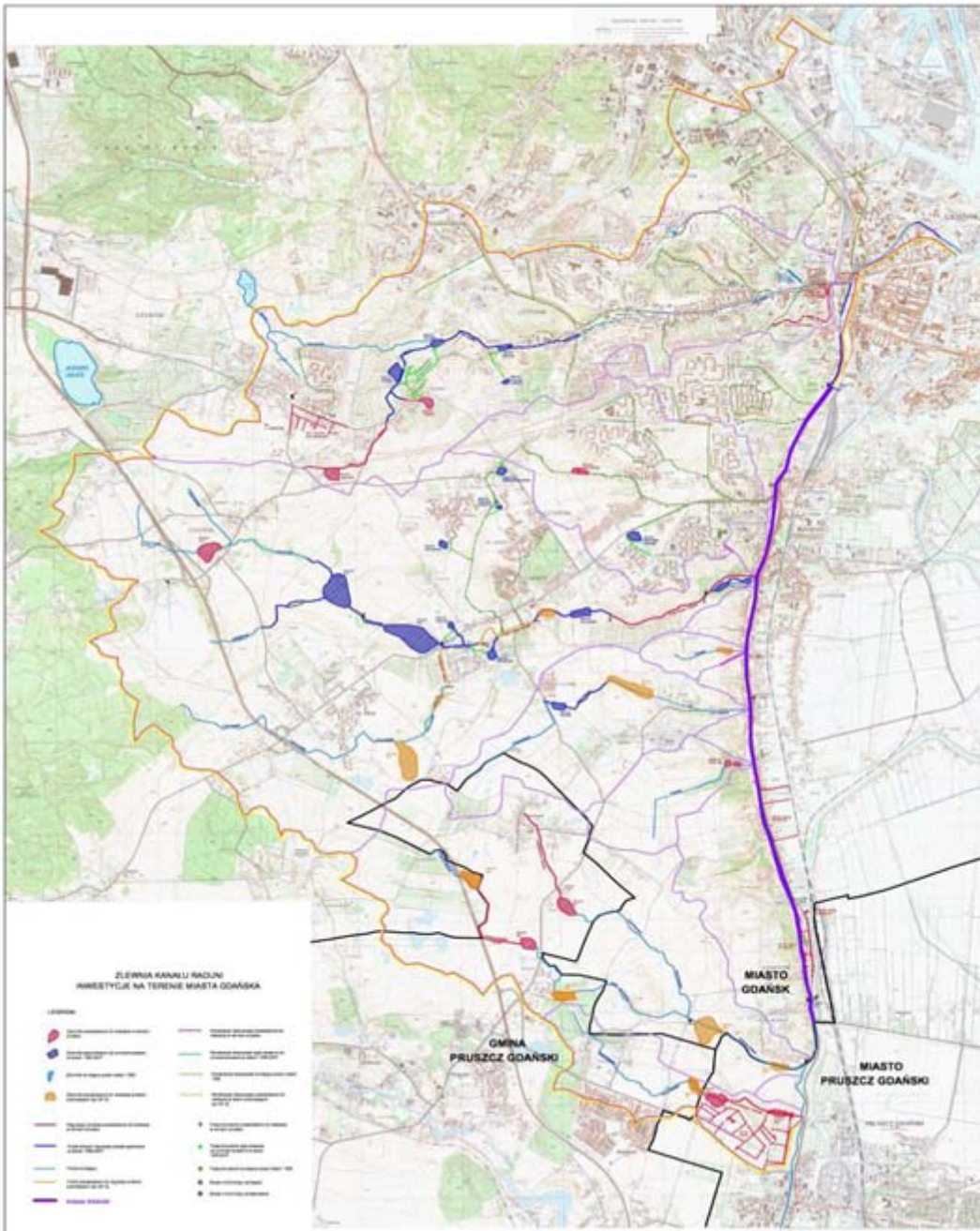
**Modernisation of the internal entrance to the Port of Gdańsk
Stage II - Rebuilding of the waterways on the Motława River (2011-2014)**

Programme of integrated flood protection of Żuławy region

Stage I: Rebuilding of the Radunia Canal within the area of Gdańsk City

2009-2014

The Radunia Canal was constructed in the years 1310–1338 due to economic and defensive reasons. The canal is 13,50 km long. Its route runs along a narrow terrace, cutting off the Żuławy plane from the moraine upland on the section from Pruszcz Gdański to Gdańsk. Its route is crossed by a series of natural watercourses flowing down from the plateau to the delta of Vistula. The watercourses having their outlet to the Canal have large drops, so that the water flow rate from the catchment is several times higher than the water flow in the Canal. On a significant length, the Canal runs along urban areas and the water level in it is up to several meters above these areas.



Programme of integrated flood protection of Żuławy region

Stage I: Rebuilding of the Radunia Canal within the area of Gdańsk City

Radunia Canal along its entire length from Pruszcz Gdanski to Biskupia Górka in Gdańsk is a large retention reservoir for waters flowing from its catchment area.



Project photos provided by Lech Makara

Programme of integrated flood protection of Żuławy region

Stage I: Rebuilding of the Radunia Canal within the area of Gdańsk City

The project goal was reconstruction and modernization of the Żuławy flood protection system, enabling people, economy and nature to be protected from losses and degradation caused by floods.

Total cost: 137,01 mln PLN

Total EU co-financing: 116,12 mln PLN (~ 26,81 mln €)



Programme of integrated flood protection of Żuławy region Stage I: Rebuilding of the Radunia Canal within the area of Gdańsk City

Flood in July 2001. Broken embankment of Radunia Canal



Programme of integrated flood protection of Żuławy region

Stage I: Rebuilding of the Radunia Canal within the area of Gdańsk City

Flood in July 2001



Programme of integrated flood protection of Żuławy region

Stage I: Rebuilding of the Radunia Canal within the area of Gdańsk City



Programme of integrated flood protection of Żuławy region

Stage I: Rebuilding of the Radunia Canal within the area of Gdańsk City



Programme of integrated flood protection of Żuławy region

Stage I: Rebuilding of the Radunia Canal within the area of Gdańsk City



Programme of integrated flood protection of Żuławy region

Stage I: Rebuilding of the Radunia Canal within the area of Gdańsk City



Programme of integrated flood protection of Żuławy region

Stage I: Rebuilding of the Radunia Canal within the area of Gdańsk City



Programme of integrated flood protection of Żuławy region

Stage I: Rebuilding of the Radunia Canal within the area of Gdańsk City

before



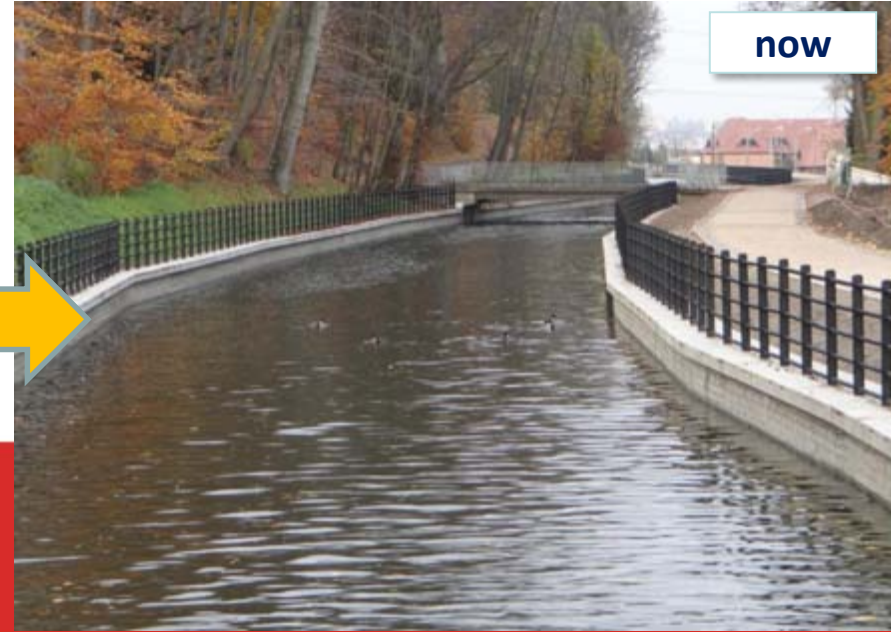
now

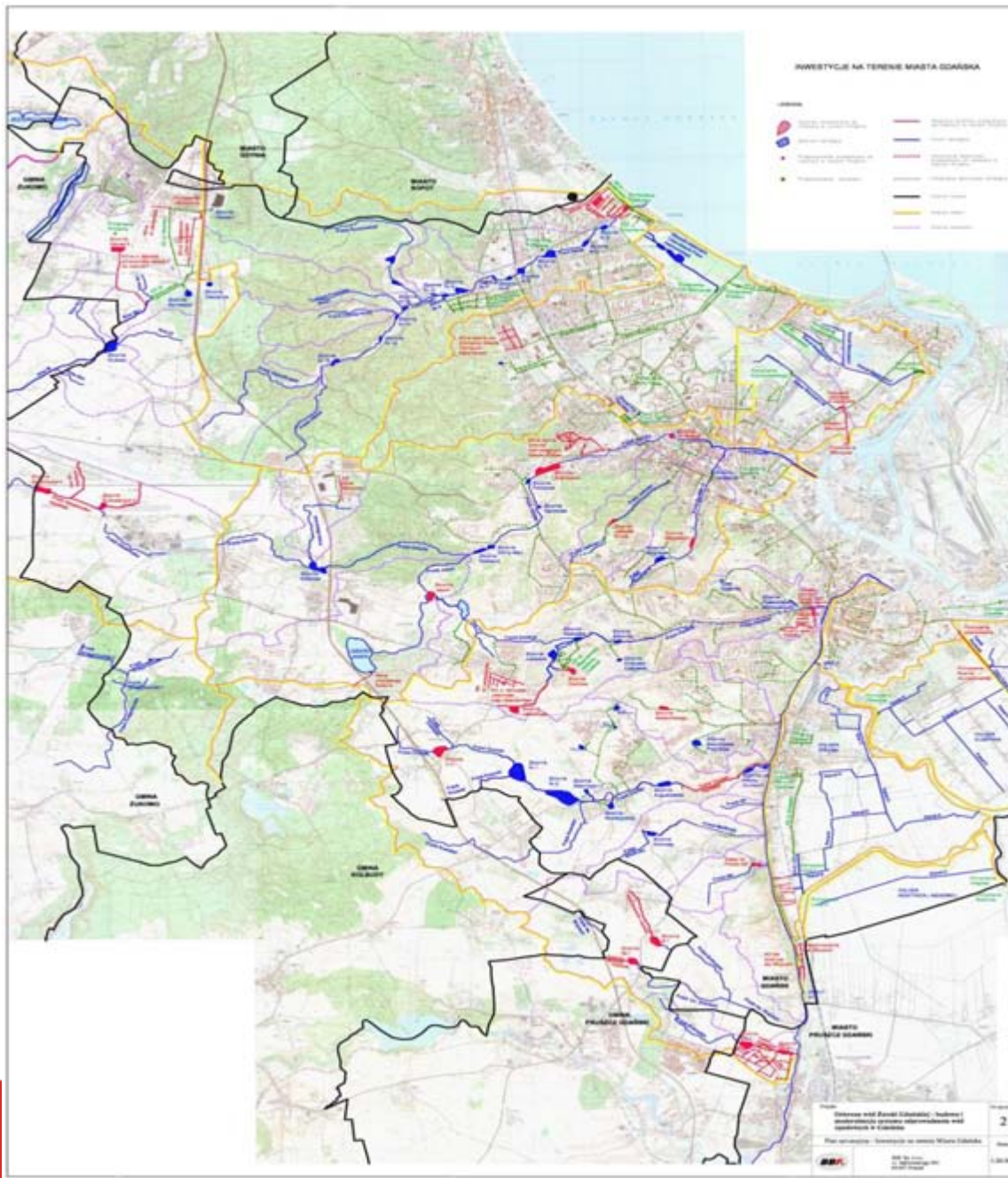


Before



now





Bay of Gdańsk water protection – construction and modernisation of the rainwater drainage system in Gdansk

Project goal was to increase the level of flood protection and improve the sanitary security of the Gulf of Gdańsk by building and modernizing storm water drainage with elements of rainwater pre-treatment, sedimentation and natural sedimentation devices in urban areas adjacent directly to the Baltic Sea: the Municipality of Gdańsk and Municipal Commune of Pruszcz Gdański.

Total cost: 127,23 mln PLN

Total EU co-financing: 61,99 mln PLN (~ 14,32 mln €)

Project photos provided by Lech Makara

Bay of Gdańsk water protection – construction and modernisation of the rainwater drainage system in Gdańsk

List of completed tasks with value [in thousands zł]

Lp	Nazwa zadania	Koszty
1	Kolektor Graniczny od ul. Jelitkowskiej do zbiornika Orłowska II	2 537,3
2	Kolektor Graniczny od zbiornika Orłowska II do ul. Gospody	4 441,8
3	Zbiornik retencyjny Orłowska II	7 153,4
4	Kanał Ulgi w ul. Orłowskiej	1 871,3
5	Budowa Kanalizacji deszczowej w ul. 3 Maja i Armii Krajowej wraz z przejściem syfonowym pod torami i odprowadzenie wód do Kanału Raduni oraz odwodnieniem terenu Urzędu Miejskiego w Gdańsku	9 239,3
6	Budowa kanalizacji deszczowej w ul. Armii Krajowej z włączeniem w ulicy 3 Maja	2 928,2
7	Zbiornik Madalińskiego	7 036,2
8	Zbiornik retencyjny "Jabłoniowa" wraz z rowem S-1	4 185,9
9	Zbiornik Cedrowa	1 958,0
10	Kanalizacja deszczowa w ul. Leszczynowej	1 372,8
11	Regulacja Potoku Oruńskiego (km 0+000 - 0+650)	1 359,1

Bay of Gdańsk water protection – construction and modernisation of the rainwater drainage system in Gdańsk

continuation [in thousands zł]

Lp	Nazwa zadania	Koszty
12	Kanalizacja deszczowa w zlewni Potoku Rotmanka (Miasto Pruszcz Gdański)	11 388,4
13	Kanalizacja deszczowa dla dzielnicy Św. Wojciech, etap I	1 342,0
14	Kanalizacja deszczowa Złota Karczma	1 855,7
15	Przebudowa zbiornika Srebrzysko	6 866,2
16	Zbiornik Budowlanych II	3 348,1
17	Kanalizacja deszczowa w ul. Jednorożca	2 102,4
18	Kanalizacja deszczowa w ul. Homera i Galaktycznej	7 786,7
19	Odwodnienie terenu pod stadion Energa Gdańsk	43 310,5
20	Zbiornik Jasień	5 083,3

Total: 127,23 mln zł

Bay of Gdańsk water protection – construction and modernisation of the rainwater drainage system in Gdańsk

Madalińskiego reservoir

before

now



Bay of Gdańsk water protection – construction and modernisation of the rainwater drainage system in Gdańsk

Cedrowa reservoir

before

now



Bay of Gdańsk water protection – construction and modernisation of the rainwater drainage system in Gdańsk

Srebrzysko reservoir

before



now



Bay of Gdańsk water protection – construction and modernisation of the rainwater drainage system in Gdańsk

Jasień reservoir



Bay of Gdańsk water protection – construction and modernisation of the rainwater drainage system in Gdańsk

Jabłoniowa reservoir and ditch S-1



Outlet structure from the reservoir



Ditch S-1

Bay of Gdańsk water protection – construction and modernisation of the rainwater drainage system in Gdańsk

Jabłoniowa reservoir and ditch S-1



**Vegetative strengthening
of the shore**



Floating islands



Tern and black-headed gull

Bay of Gdańsk water protection – construction and modernisation of the rainwater drainage system in Gdańsk

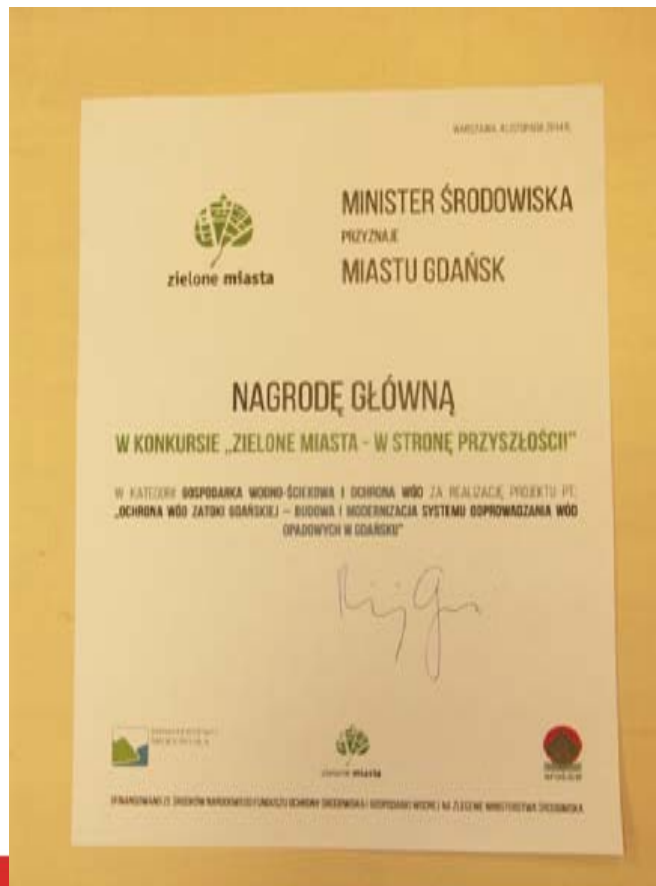
The ground drainage and Wielopole pump station for the stadium Energa Gdańsk



Bay of Gdańsk water protection – construction and modernisation of the rainwater drainage system in Gdańsk



On November 4, 2014, the Minister of Environment awarded the project with the Grand Prize in the "Green Cities towards the future" competition in the category of Water Management and Water Protection.



The Programme for Revitalisation of Waterways in Gdansk

2008-2012

PROGRAM OŻYWIENIA DRÓG WODNYCH W GDAŃSKU

Objectives:

- maintaining safety on inland waterways,
- antiflood protection,
- city sightseeing from the water side,
- recreational purposes.

Beneficiary : The Municipality of Gdansk

Partner: The Historical Museum of the City of Gdansk

Total cost: 37,76 mln PLN (~ 8,72 mln €)

Total EU co-financing: 16,99 mln PLN (~ 3,9 mln €)

Implemented tasks:

- creation of water tram lines with 11 stops,
- construction of 3 marinas for vessels with full infrastructure (bosmanate offices, mooring platforms, vessels launching slipways)
- modernisation of the promenades and their adaptation for the needs of disabled.



Opisane w Wykazie Programów Rozwojowych na podstawie mapy Baza Informacji Usługi Miejskiej w Gdańsku

before



ŽABI KRUK marina & bosmanate office

now



before



TAMKA marina riverbank

now



Modernisation of the internal entrance to the Port of Gdańsk Stage II - Rebuilding of the waterways on the Motława River 2011-2014

Project goals:

- increasing competitiveness of the Port of Gdańsk in the Baltic Sea region;
- increasing the efficiency and safety of transport on the off-shore section of Motława river,
- deepening the riverbed of the Motława;
- broadening the access to the Old Town area from the water side,
- eliminating the threat of construction disasters (falling parts of the river bank to the water)

Total cost: 27,47 mln PLN (~ 6,34 mln €)

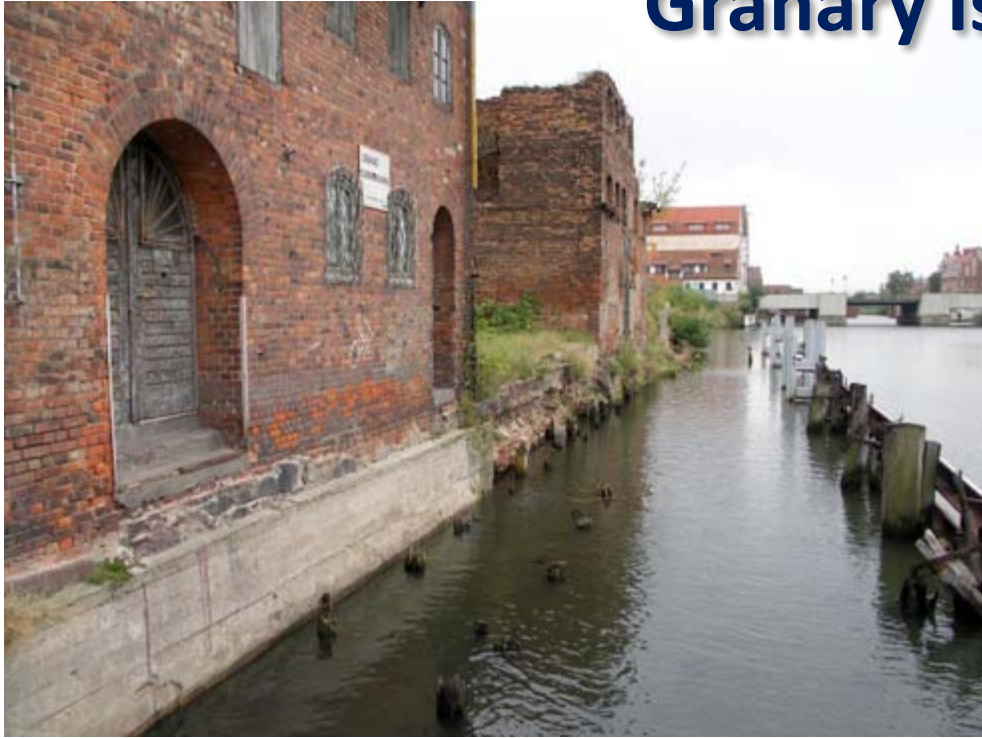
Total EU co-financing: 23,25 PLN (~ 5,37 mln €)

Works done:

Waterfront reconstruction of the northern headland of Granary Island of total length of almost 600 m;



Granary Island - until 2011



before



Granary Island - Transformation in 2014



after



Granary Island 2019



Major investments planned in the perspective of 20 years:



**Rainwater management systems
in urban areas - City of Gdańsk**

FUTURE

**Development of river wharfs
of Old and New Motława**

FUTURE

Stogi Island riverbank

FUTURE

Young City Gdańsk

Rainwater management systems in urban areas - City of Gdańsk (2015-2021)

Beneficiary : The Municipality of Gdansk

Total cost: 131,31 mln PLN (~ 30,5 mln €)

Total EU co-financing: 80,77 mln PLN (~ 18,78 mln €)

The project includes 13 investment tasks. 7 tasks have been completed, 5 tasks are under construction with the completion date in 2019 (3 tasks) and 2020 (2 tasks). The implementation of the last task is planned in 2020/2021.



Osowa II reservoir under construction



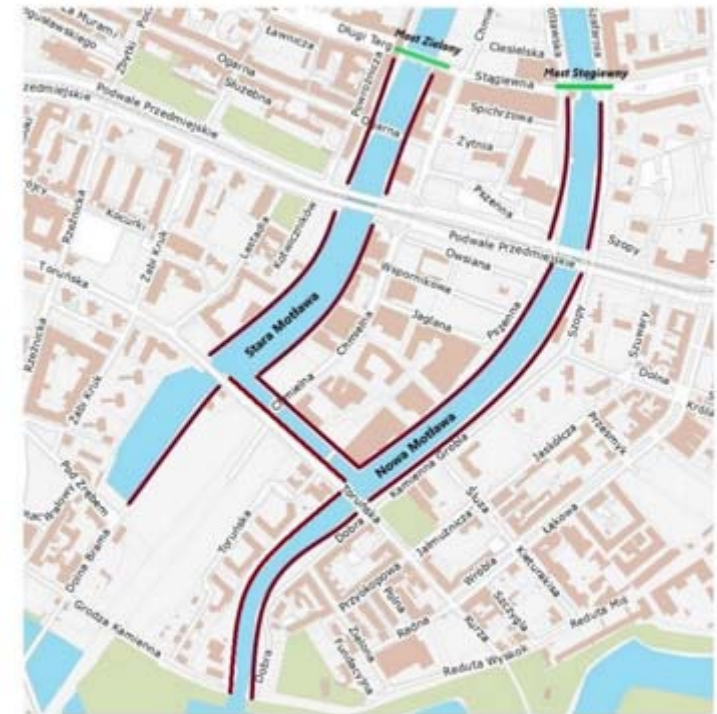
Strzelniczka II reservoir under construction

Development of river wharfs of Old and New Motława (downtown)

Development concept should be ready in 2020 (walking paths and mooring possibility for small boats)

Koncepcja zagospodarowania nabrzeży Nowej i Starej Motławy wraz z oszacowaniem kosztów i podziałem na etapy realizacji

Mapa poglądowa

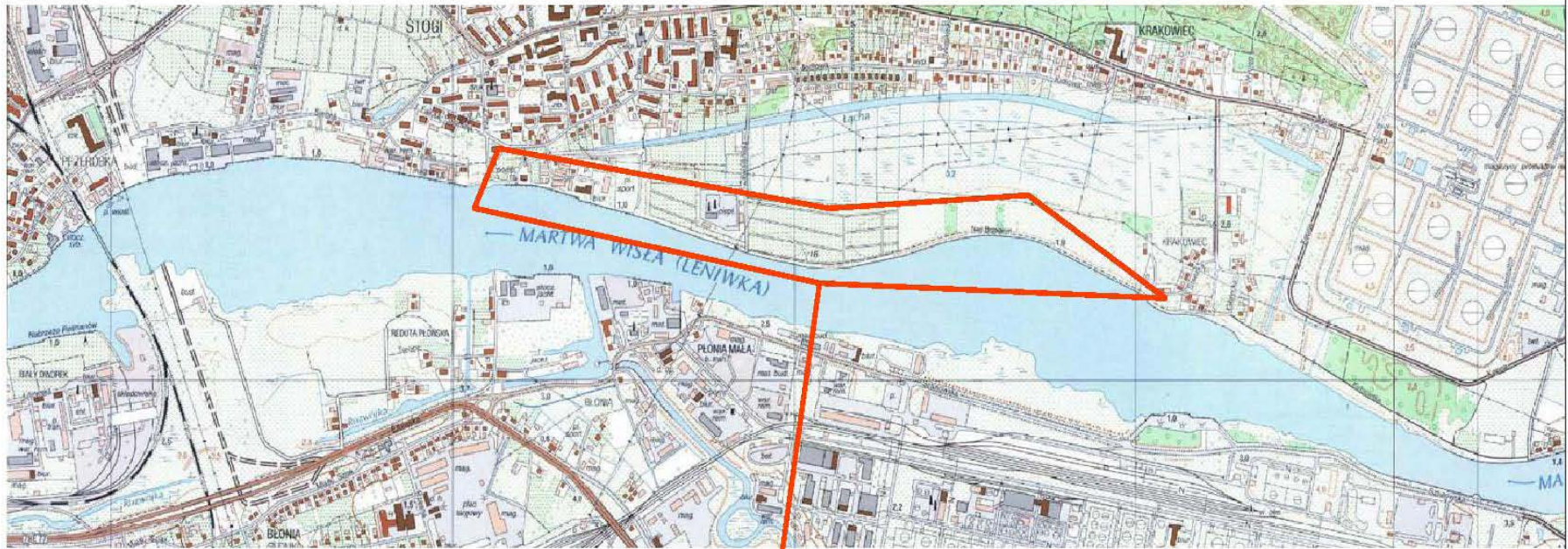


Legenda:

— - nabrzeża objęte koncepcją

Stogi Island – 1,8 km river embankment from Steczka Str. to Mewy Str.

LOKALIZACJA INWESTYCJI NABRZEŻY WYSPI STOGI



LOKALIZACJA INWESTYCJI
NABRZEŻA WYSPI STOGI

NAVPRO HYDROTECHNIKA SP. Z O.O.		
KONCEPCJA BUDOWY NABRZEŻY WYSPI STOGI		
Tytuł	LOKALIZACJA	12/2016
Investor	DYREKCJA ROZBUDOWY MIASTA GDAŃSKA	
Opracował:	mgr inż. Jan Kłosowski mgr inż. Dominika Jędrzejewska	skala 1:12 000
Projektował:	inż. Andrzej Nawrot wp. nr. POM/0224/P00K/07	rys. S.01
Sprawił:	mgr inż. Piotr Kłosowski wp. nr. SKIF7342134698	10.2016

Stogi Island

In 2016 City of Gdańsk received a concept documentation for the section of Stogi Island from Steczka Str. To Mewy Str. (1,8 km).

It is planned to build a river bank enclosure with a structure based on steel leakproof walls that perform the function of:

- Flood protection,
- The boulevard route (sidewalks, bicycle path with the possibility of moving technical vehicles),
- mooring for vessels and residential barges on selected sections.

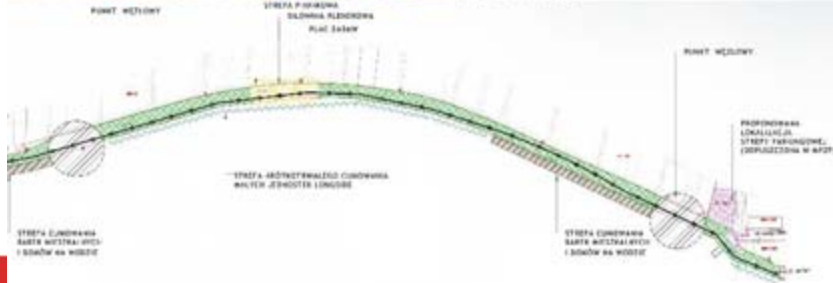
For the sections with mooring function, it is assumed that wharfs will be provided with utilities in the form of electrical and water connections, enabling mooring of residential units all year round.



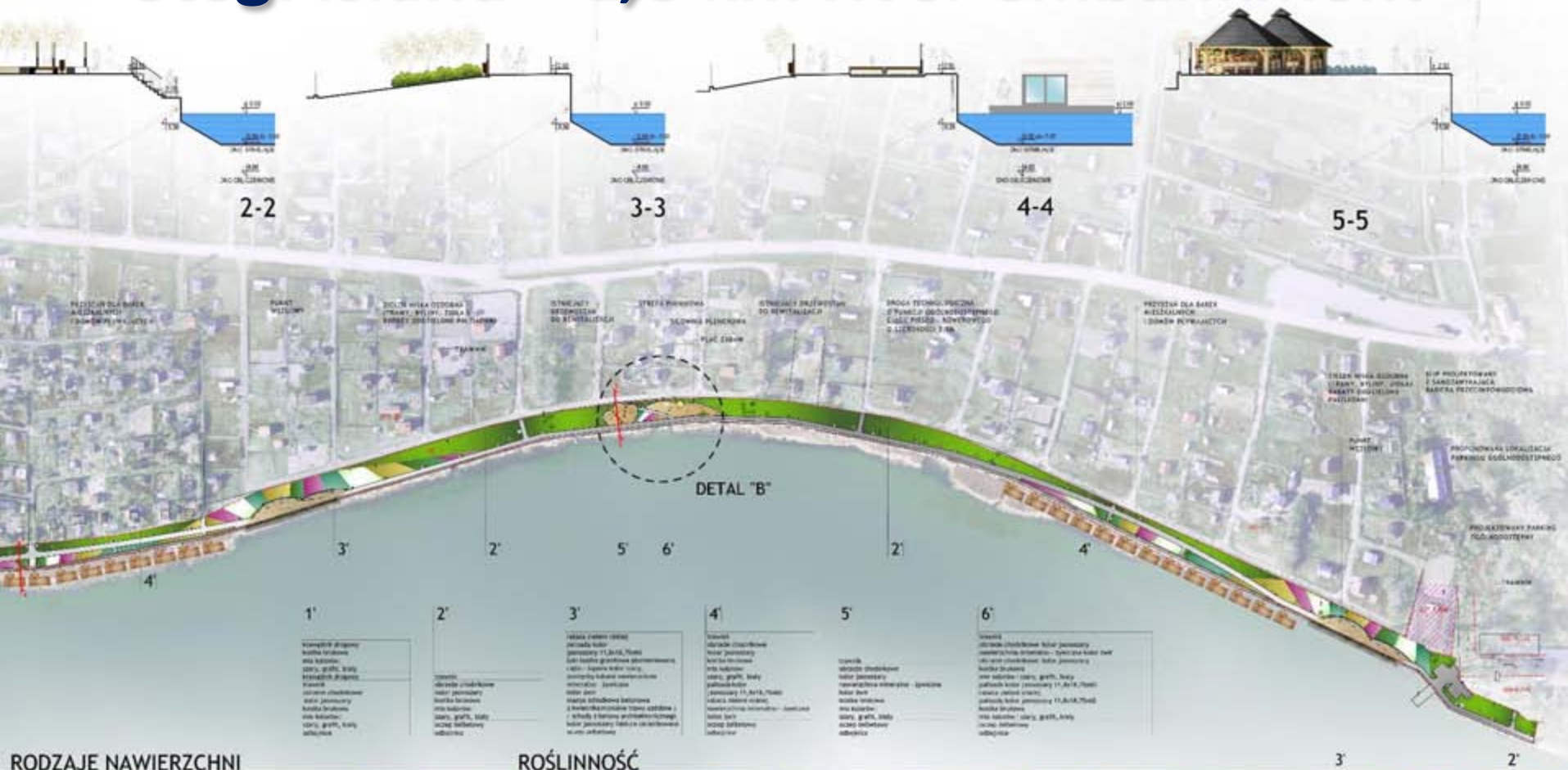
Stogi Island – 1,8 km river embankment



INWENTARYZACJA FOTOGRAFICZNA STANU ISTNIEJĄCEGO NABRZEŻA



Stogi Island – 1,8 km river embankment



RODZAJE NAWIERZCHNI



KOSTKA BRUKOWA
(KOLOR - SZARY, BIAŁY, GRANIT)

NAWIERZCHNIA MINERALNO-ZYWIETNA
(ZWIĘZ - KOSTKA GRANATOWA SZARA)

GRANIT HYDROTECHNICZNY

ROŚLINNOŚĆ



TYMIANEK

KOZŁOZĘBA SENNA

MIĘTA PIEPRZOWA

RUMIANEK

SZALWIA Z TURZYCĄ WRZOSIOWĄ

TURZYCA MORZKOWA

TURZYCA

SZALWIA TRÓJBARWNA

KŁOCH STRZYPASTOKOWY

MAŁA ARCHITEKTURA



LAWKA MIEJSKA
KOLORYSTYKA: stal RAL 7024 / drewno orzech

STÓŁEK NA ROWERY
KOLORYSTYKA: stal RAL 7024

KOSZ NA ŚMIECI
KOLORYSTYKA: stal RAL 7024 / drewno orzech

LATARNIA

LAMPY GRUNTOWE

TOAILETA AUTOMATYCZNA

SŁUPKI OŚWIETLENIOWE

DYSTRYBUTOR PORTYNY Z OŚWIETLENEM

BARIERKI
KOLORYSTYKA: stal RAL 7024 / drewno orzech

LAWKA MIEJSKA
KOLORYSTYKA: stal RAL 7024 / drewno orzech

Stogi Island – 1,8 km river embankment



Young City Gdańsk



In 2016 City of Gdańsk also received a concept documentation for the wharf of Young City Gdańsk.

It is planned to build a representative promenade that will be also adapted to vessels mooring.

Due to very high estimated cost it will not be possible to start the task without external co-financing.



Young City Gdańsk

modern and safe post-industrial district of the future

MAŁA ARCHITEKTURA



ZAGOSPODAROWANIE NABRZEŻA - WARIANT 2 DLA 8-10M - RZUT
Skala 1:1000

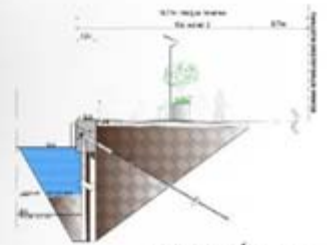
WYBRANE PRZEKROJE - WARIANT 2 DLA 8-10 M
Skala 1:200



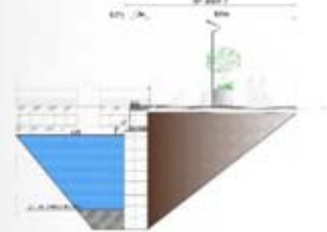
Length of the waterfront: 1080 m

WARIANT 2 DLA 8-10 M

Inland private area



PRZEKROJ 1 - 1



PRZEKROJ 2 - 2



PRZEKROJ 3 - 3

Young City Gdańsk

RODZAJE NAWIERZCHNI



PLITY BETONOWE
z WYKONANIEM W 100%, 50 I 25% CIĘŻY WIELKOPOROWATEJ



PLITY WIELKOPOROWATE
Z BETONU ARCHYTEKTONICZNEGO



NAPISY TŁOCZONE W BLACHACH
MIEDZNYCH WŁOCZANE W PODŁOŻE



CIEGŁA RĘCZNE
FORMOWANA



GRANIT HYDROTECHNICZNY

ROŚLINNOŚĆ



BERRERYS "MARA KOBOLD" INDIANST CHIRAZI TRAWA IMPERATA CYLINDRICA TRAWA "RED BARON" KOŁEUS RAINBOW KUSTRZEWA KOTLASTA TURZYCA SZTYWNA "AUREA" TRAWA OZDOBNA CZERWONA "GONIKHA" SZALWIA TRUGBARWA KŁON POSPOLITY

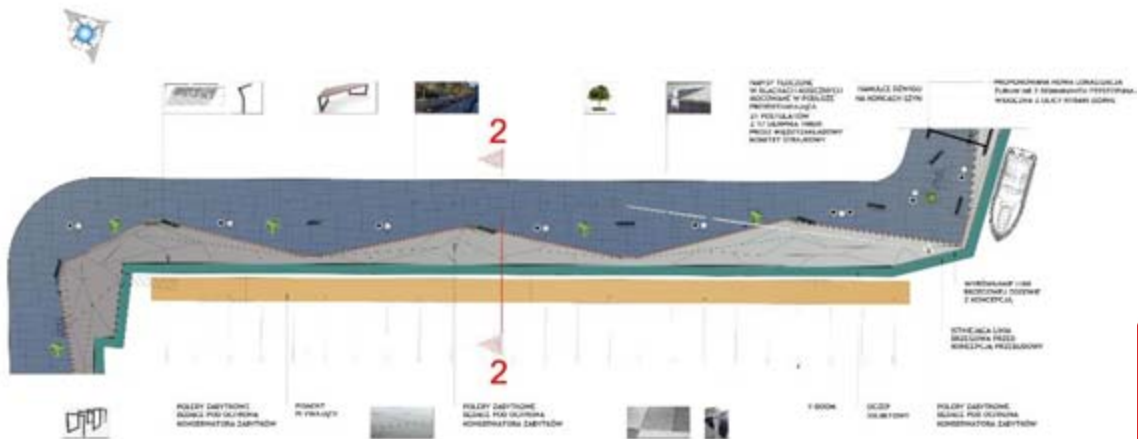


WARIANT 3 DLA 12 M

DETAL "A" - WARIANT 3 DLA 12M - PUNKT WĘZŁOWY



DETAL "B" - WARIANT 3 DLA 12M - PUNKT WĘZŁOWY





URZĄD MIEJSKI W GDAŃSKU

Wydział Programów Rozwojowych



Paweł Łukasiak

Chief Specialist

Contact:

City Hall of Gdańsk

pawel.lukasiak@gdansk.gda.pl

www.gdansk.pl